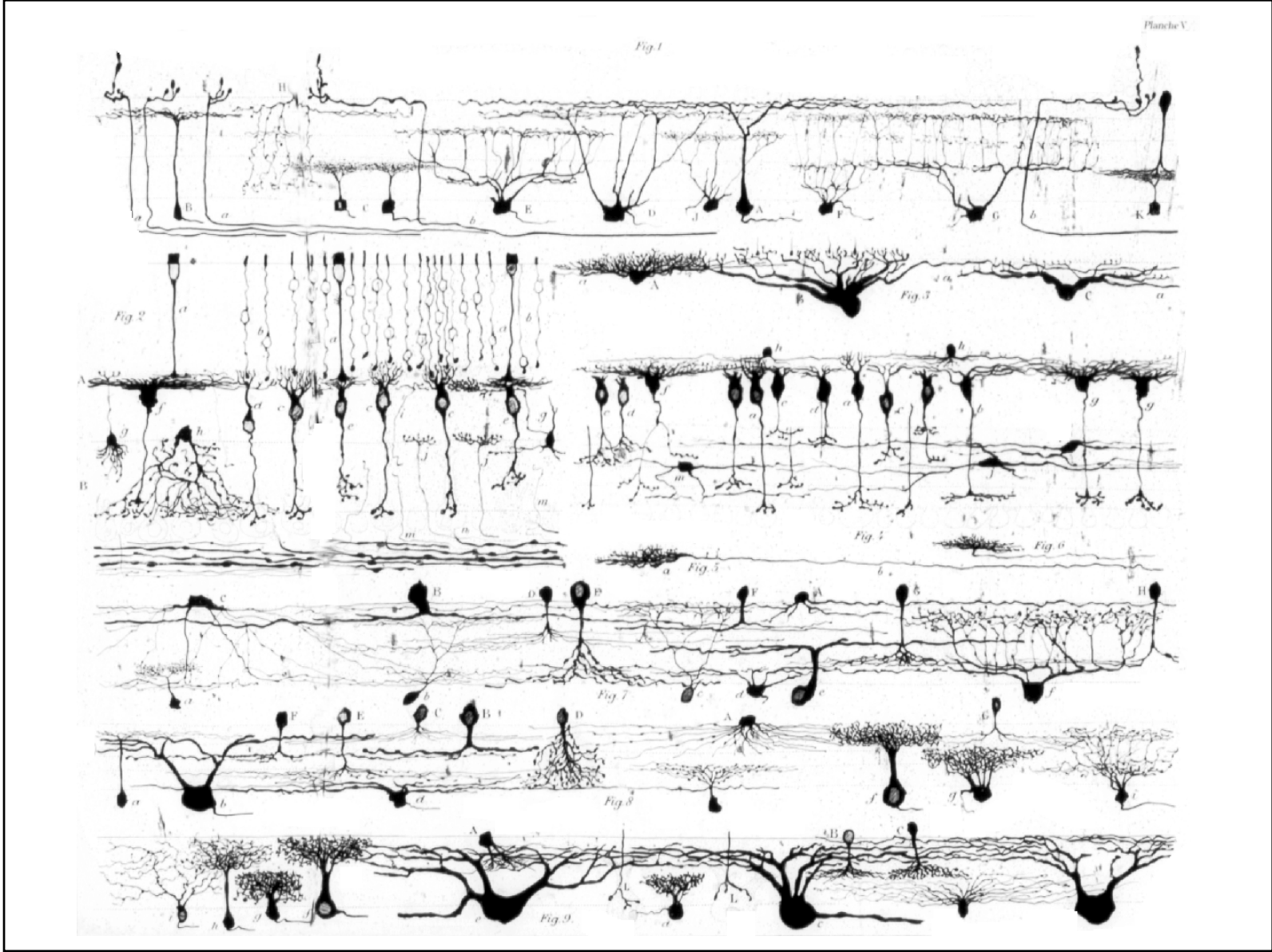
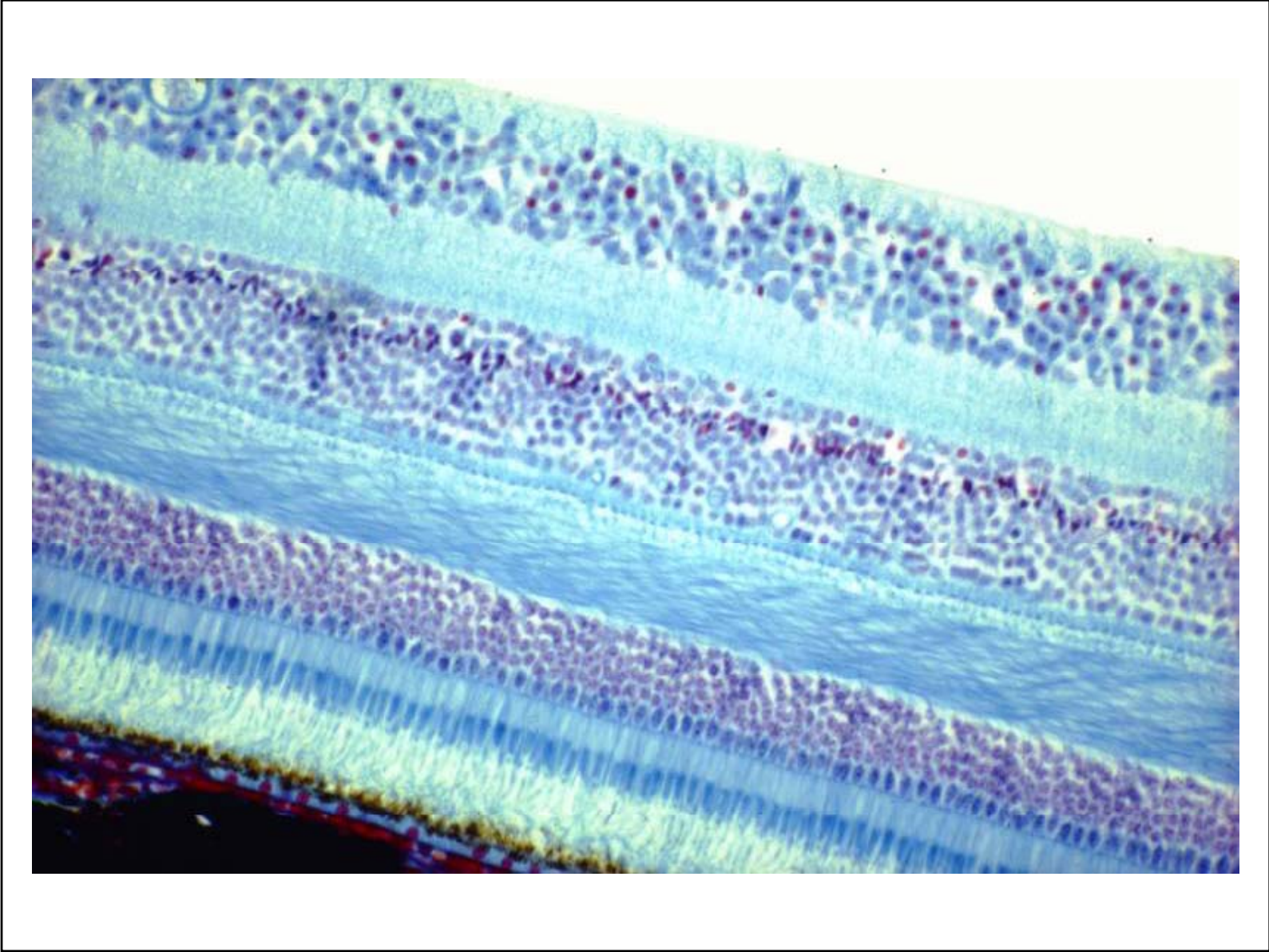
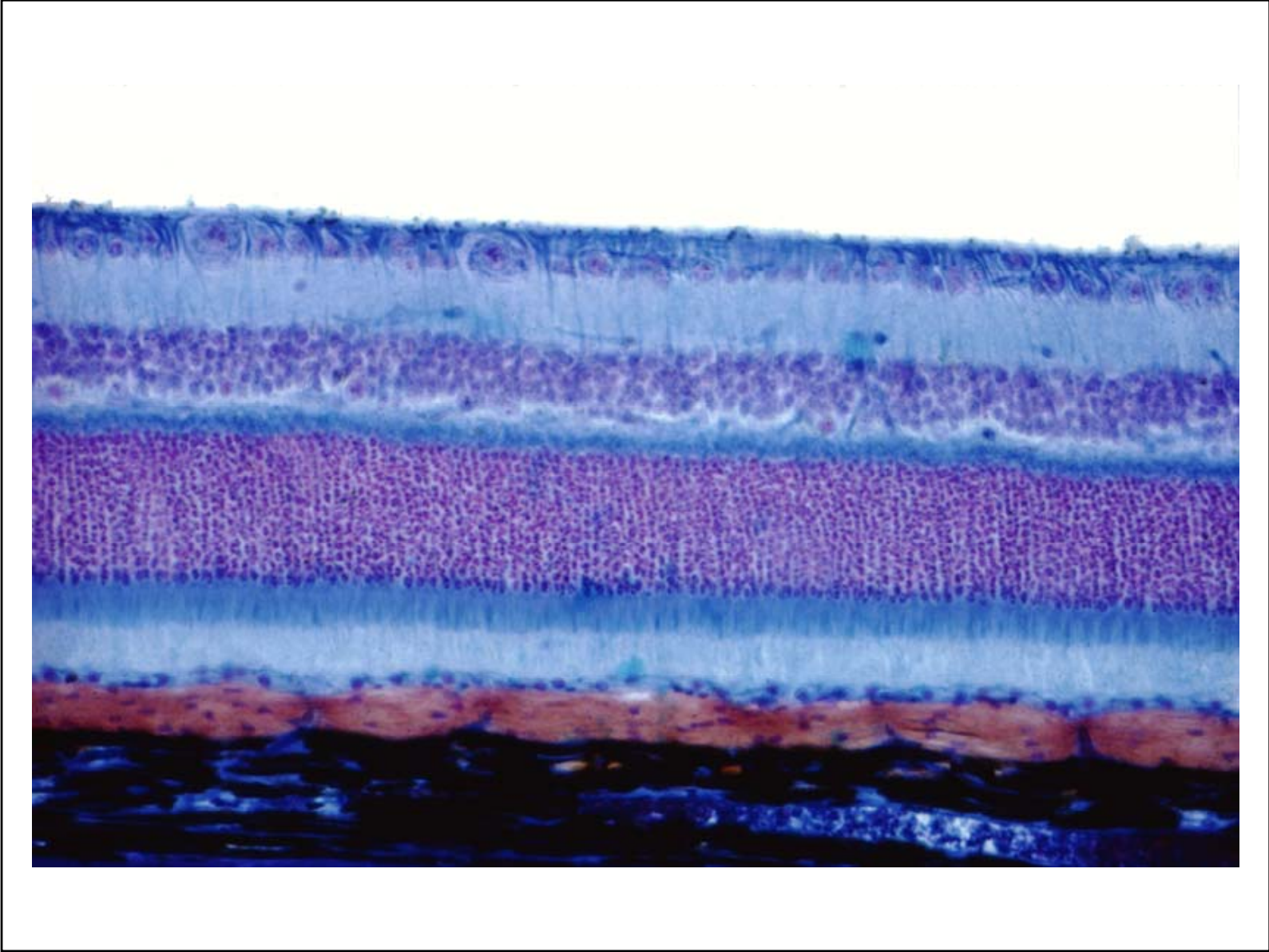


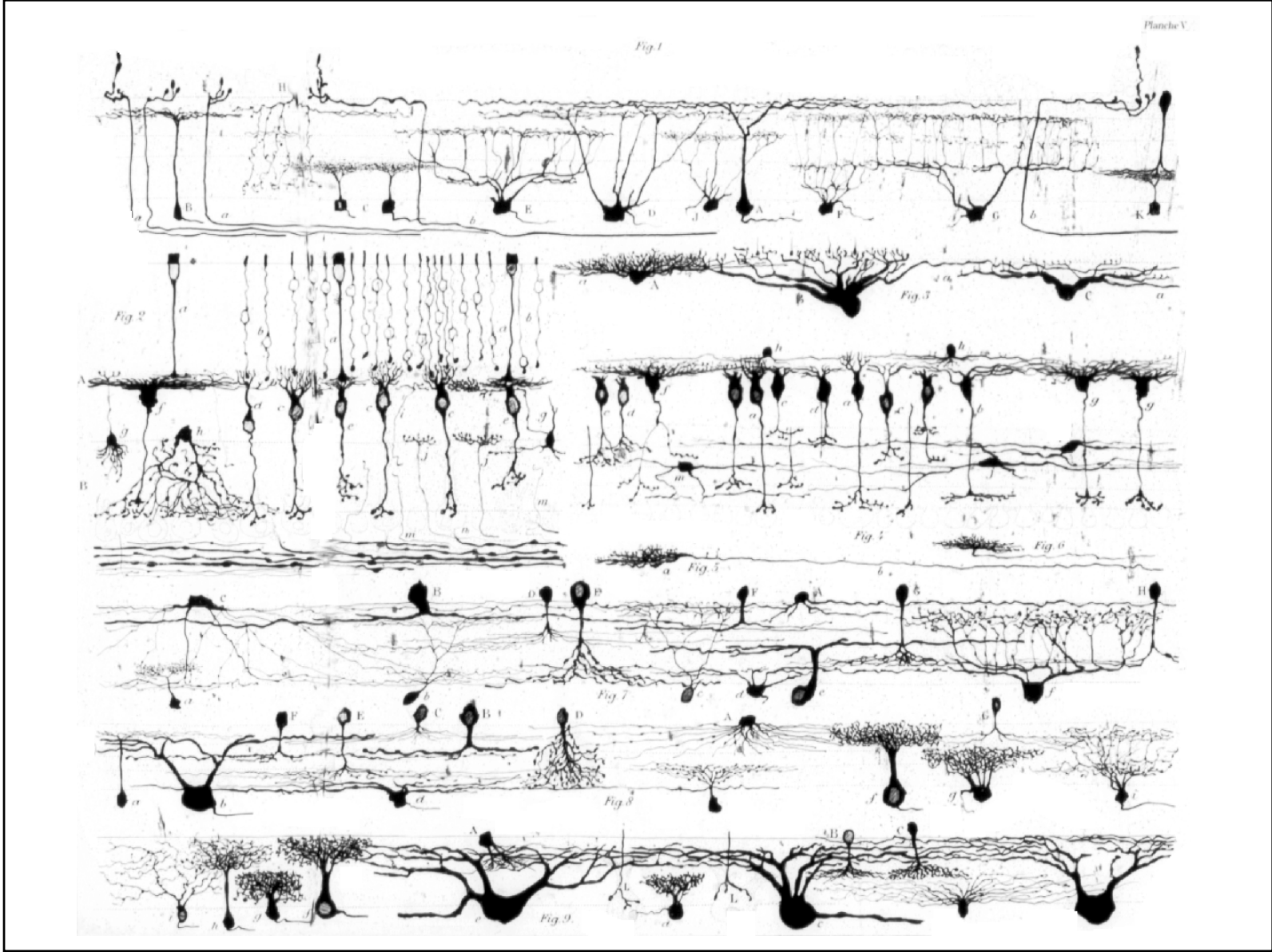
Eye and Brain

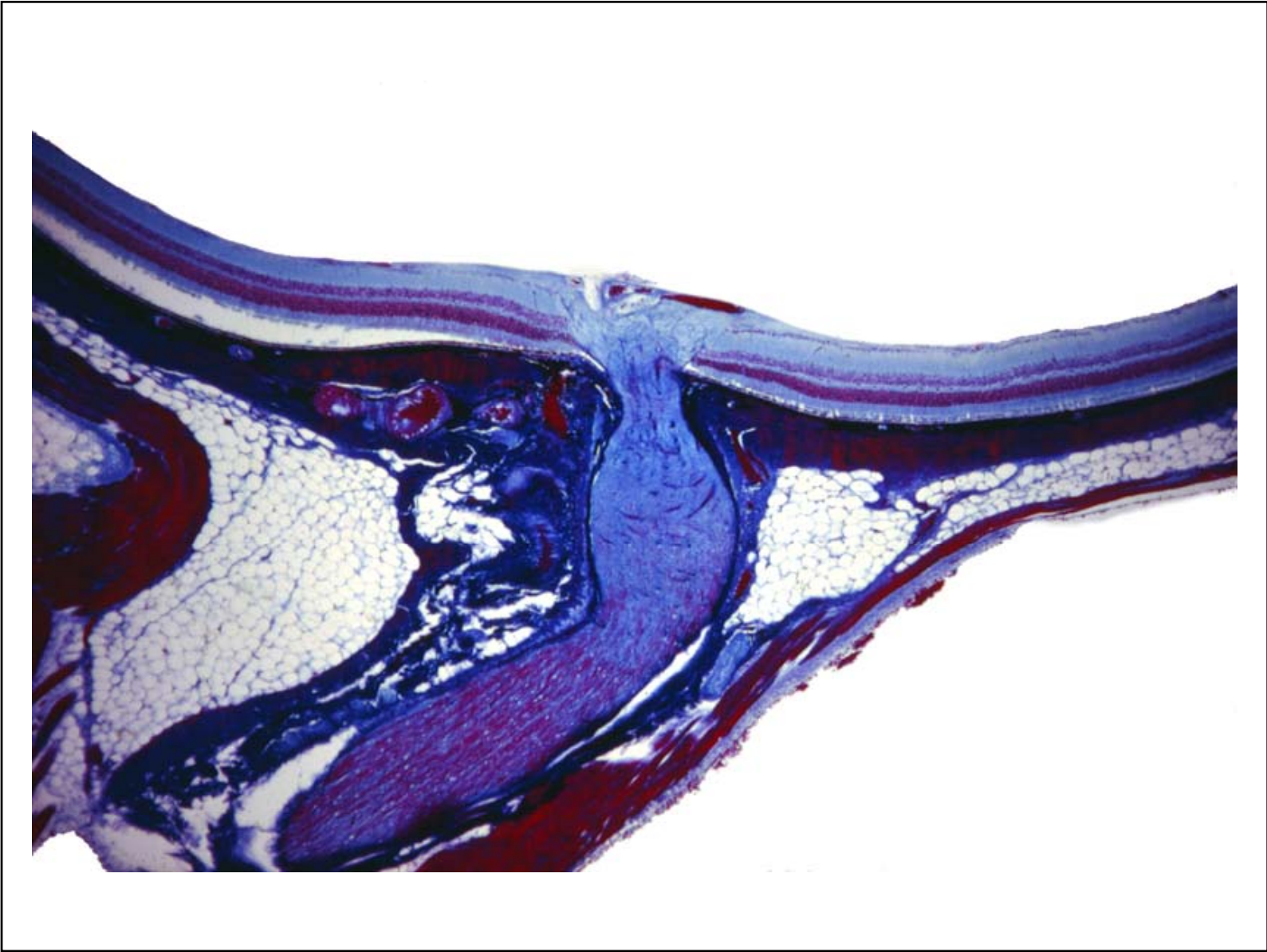
Central visual pathways

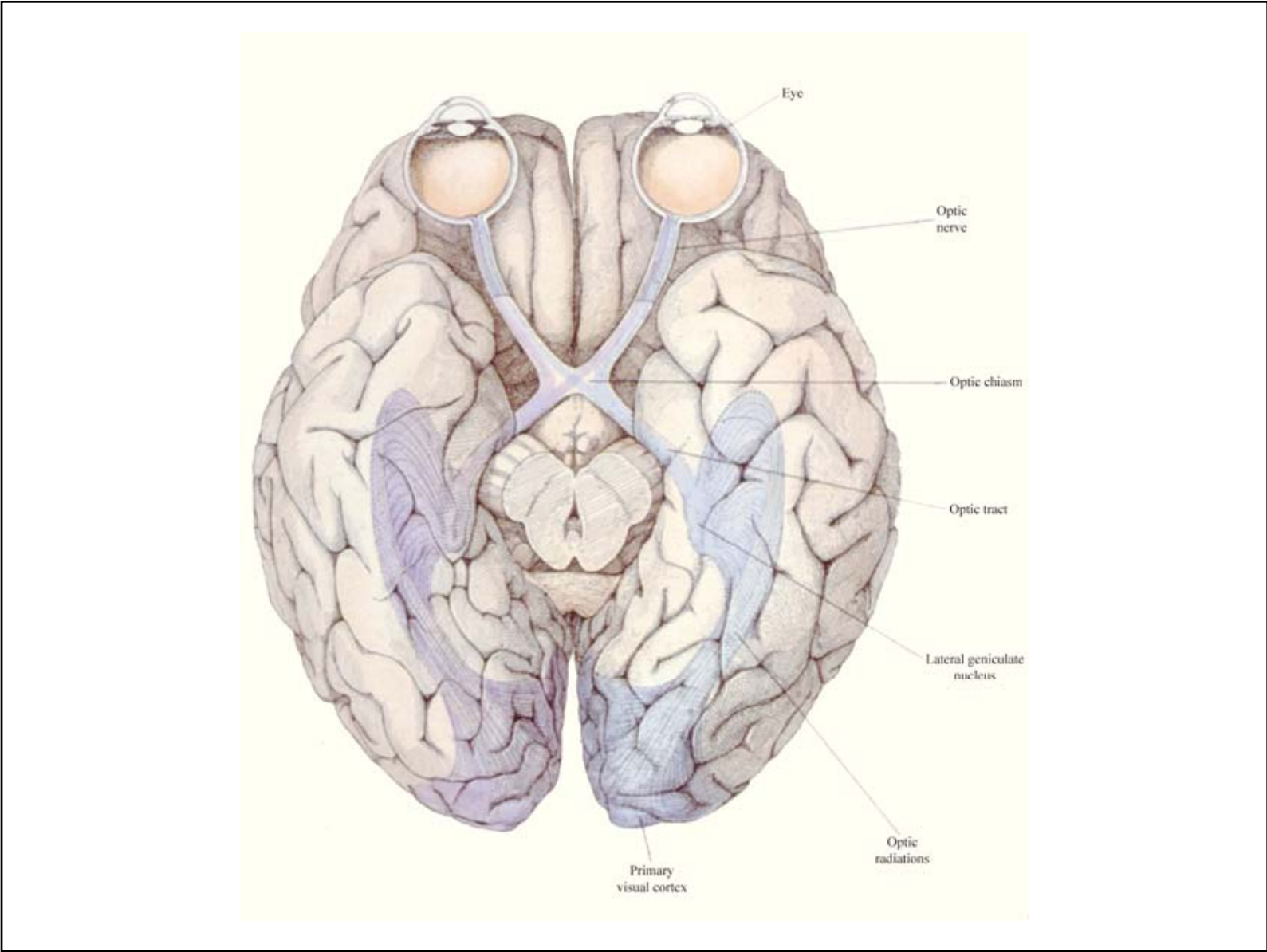


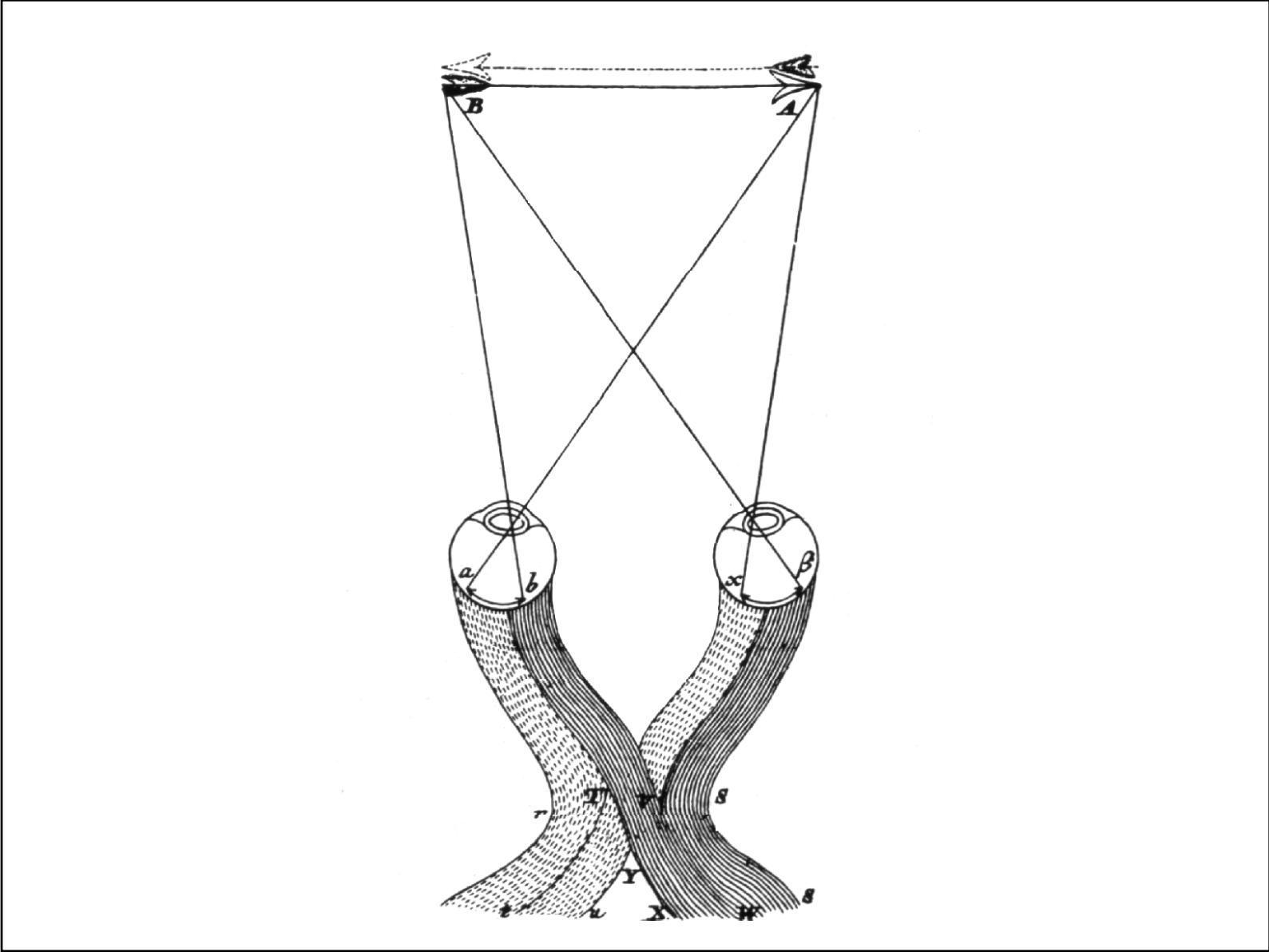


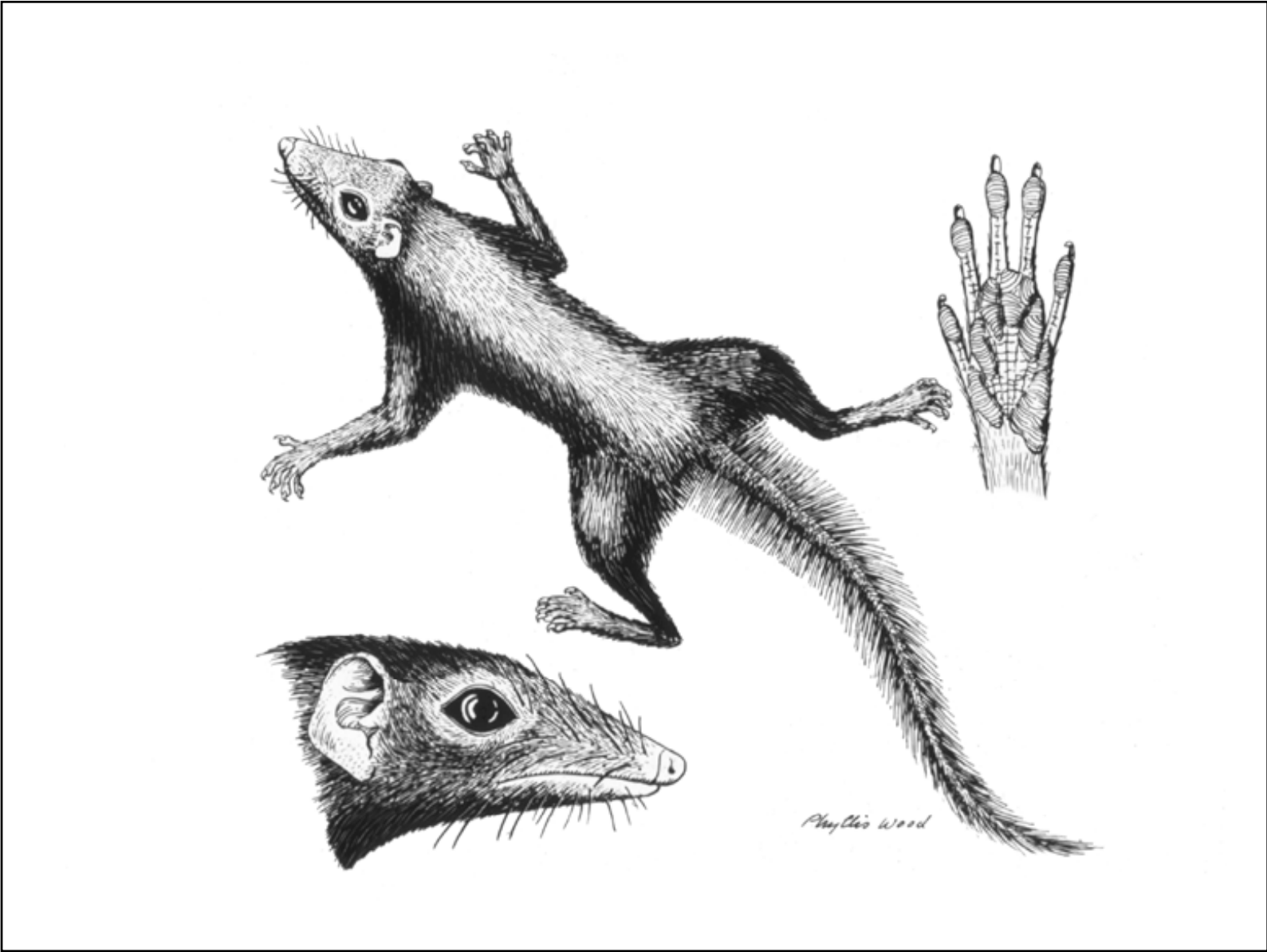


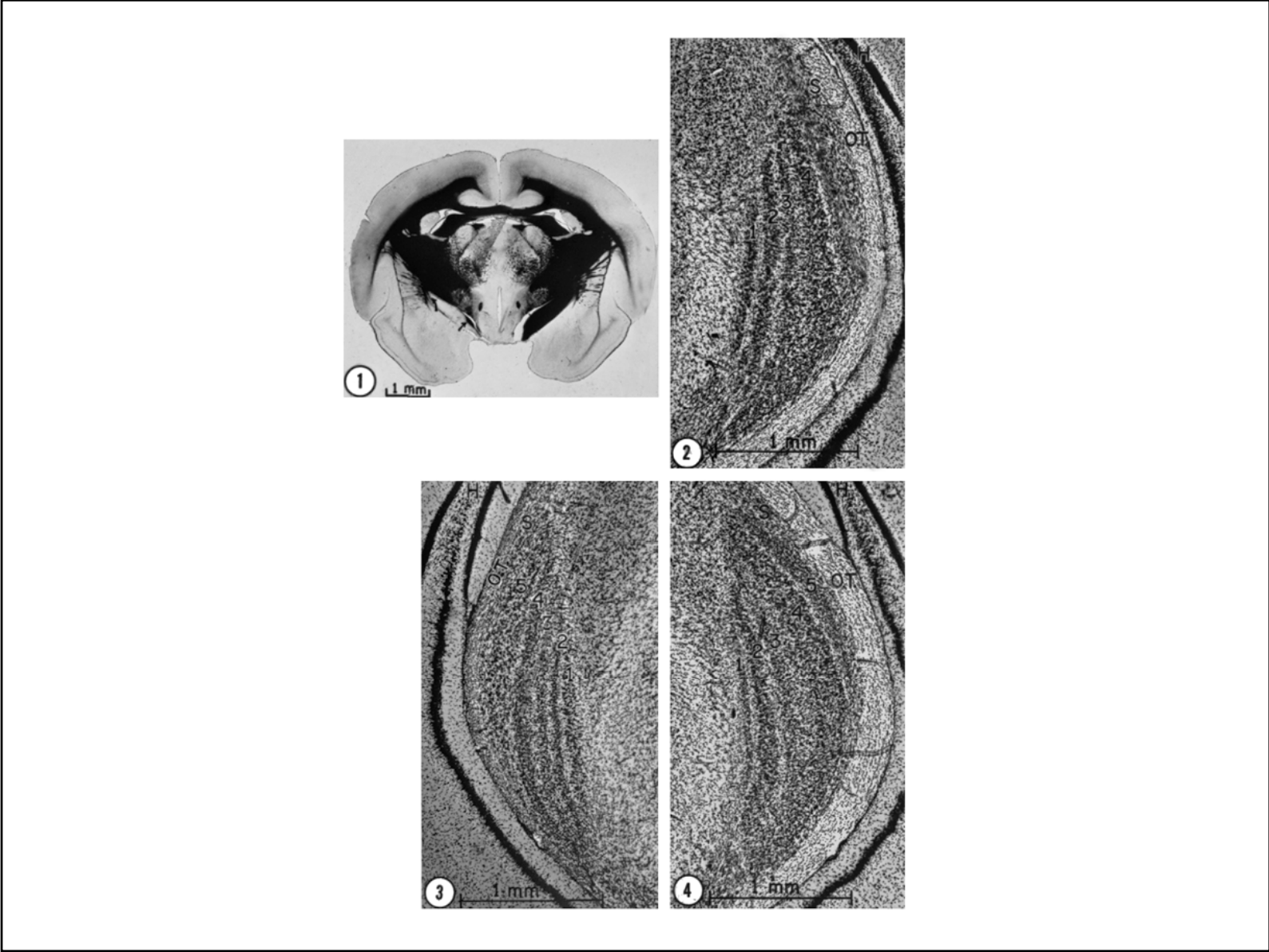


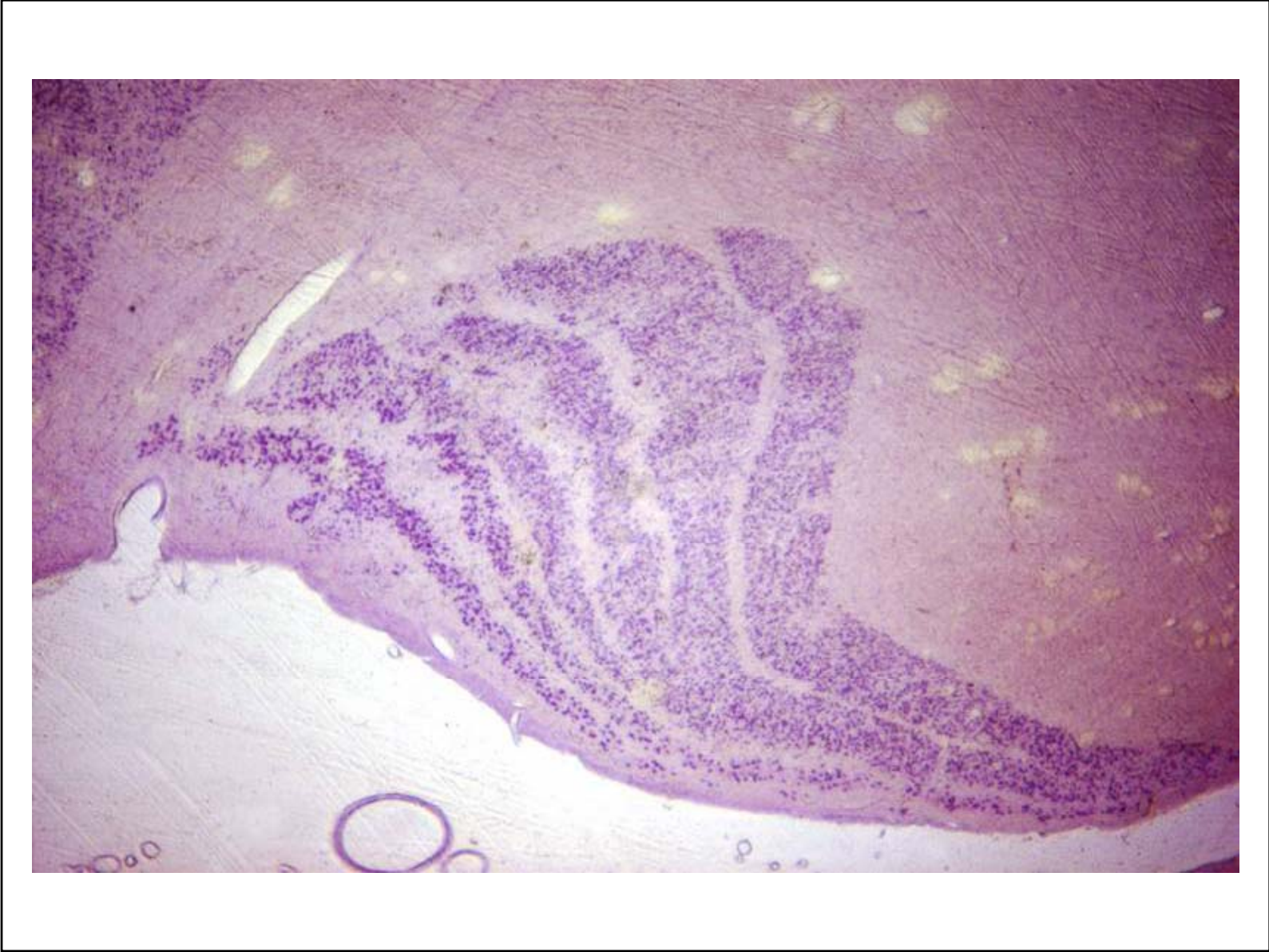


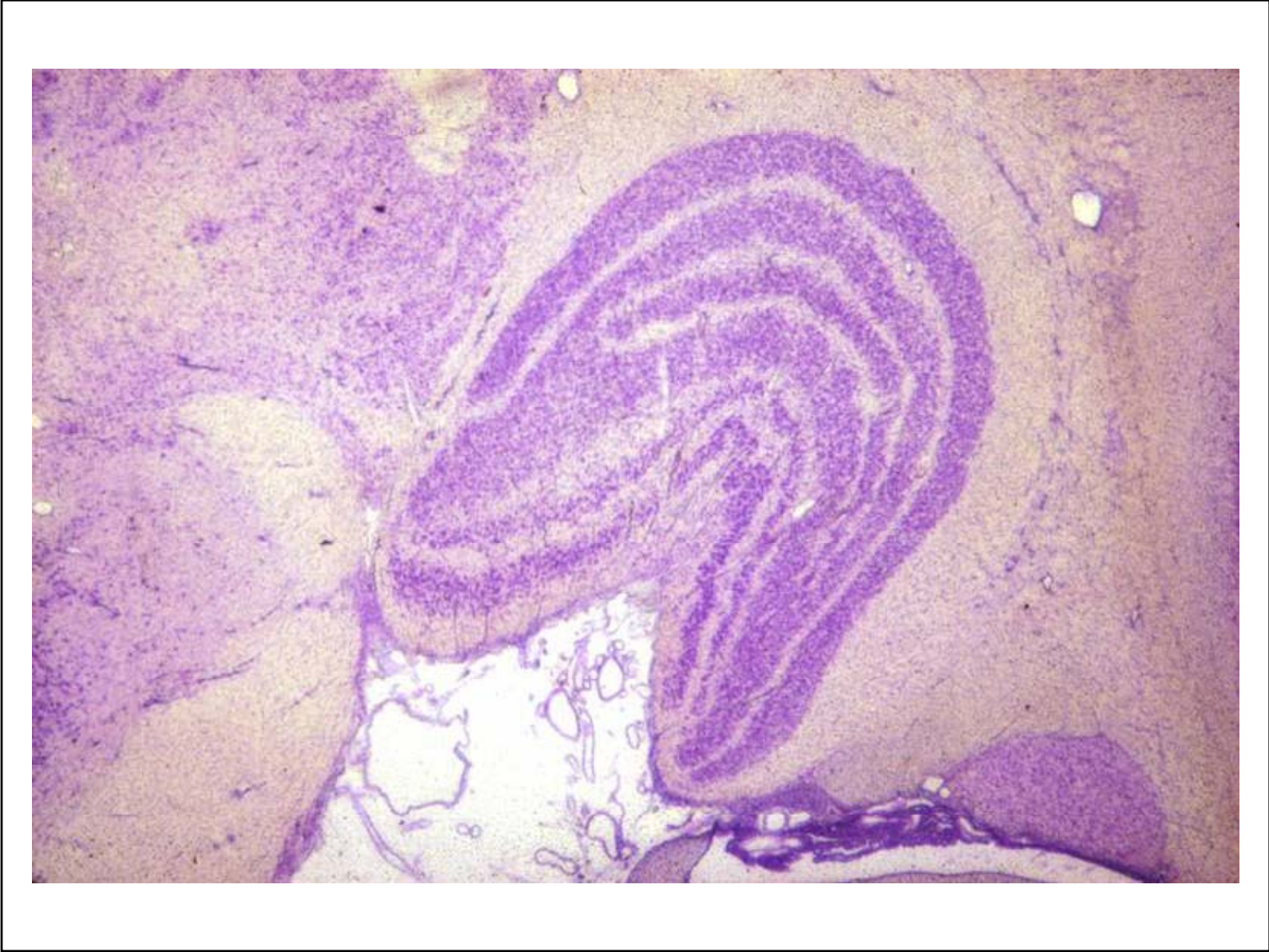


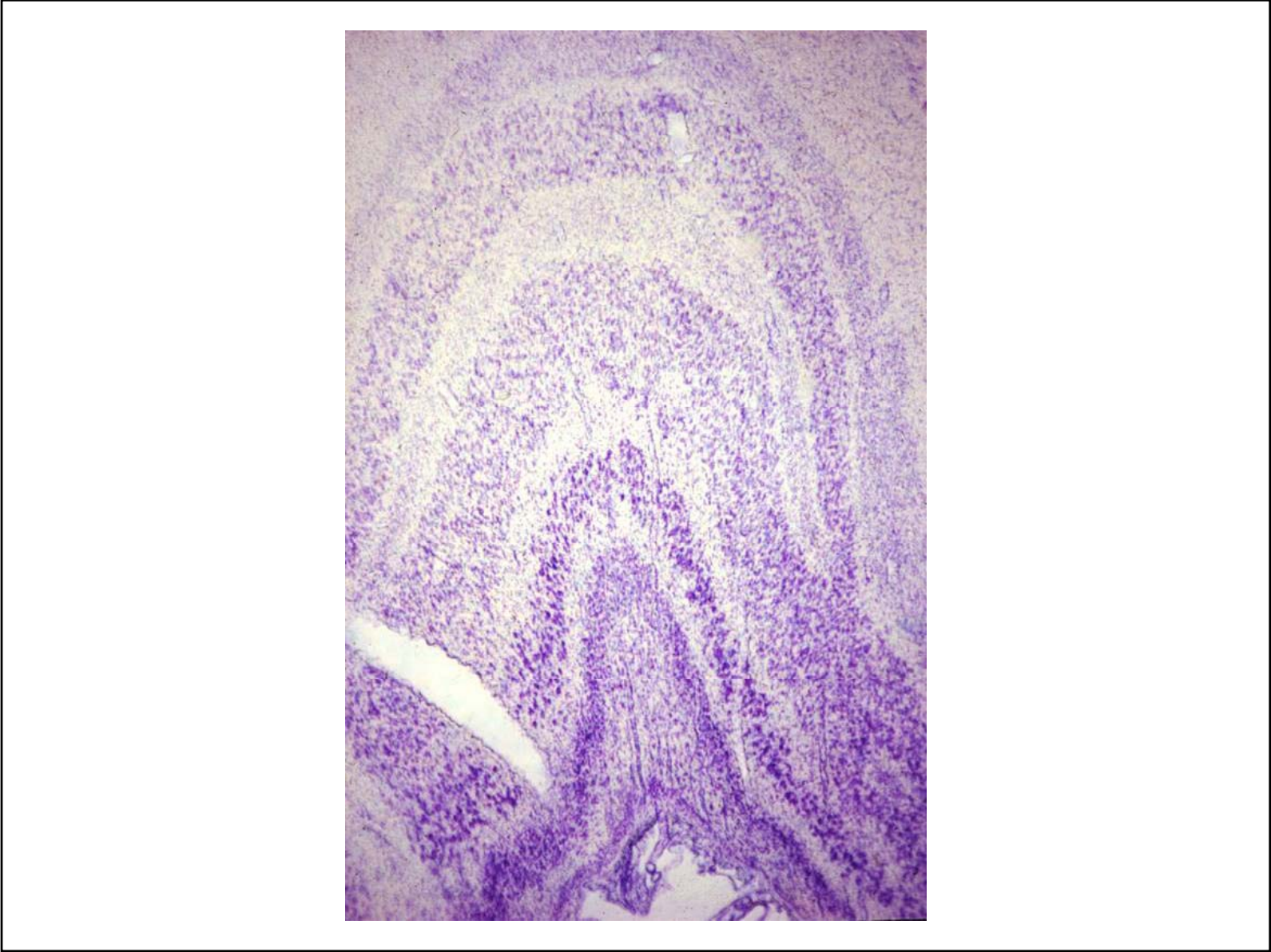


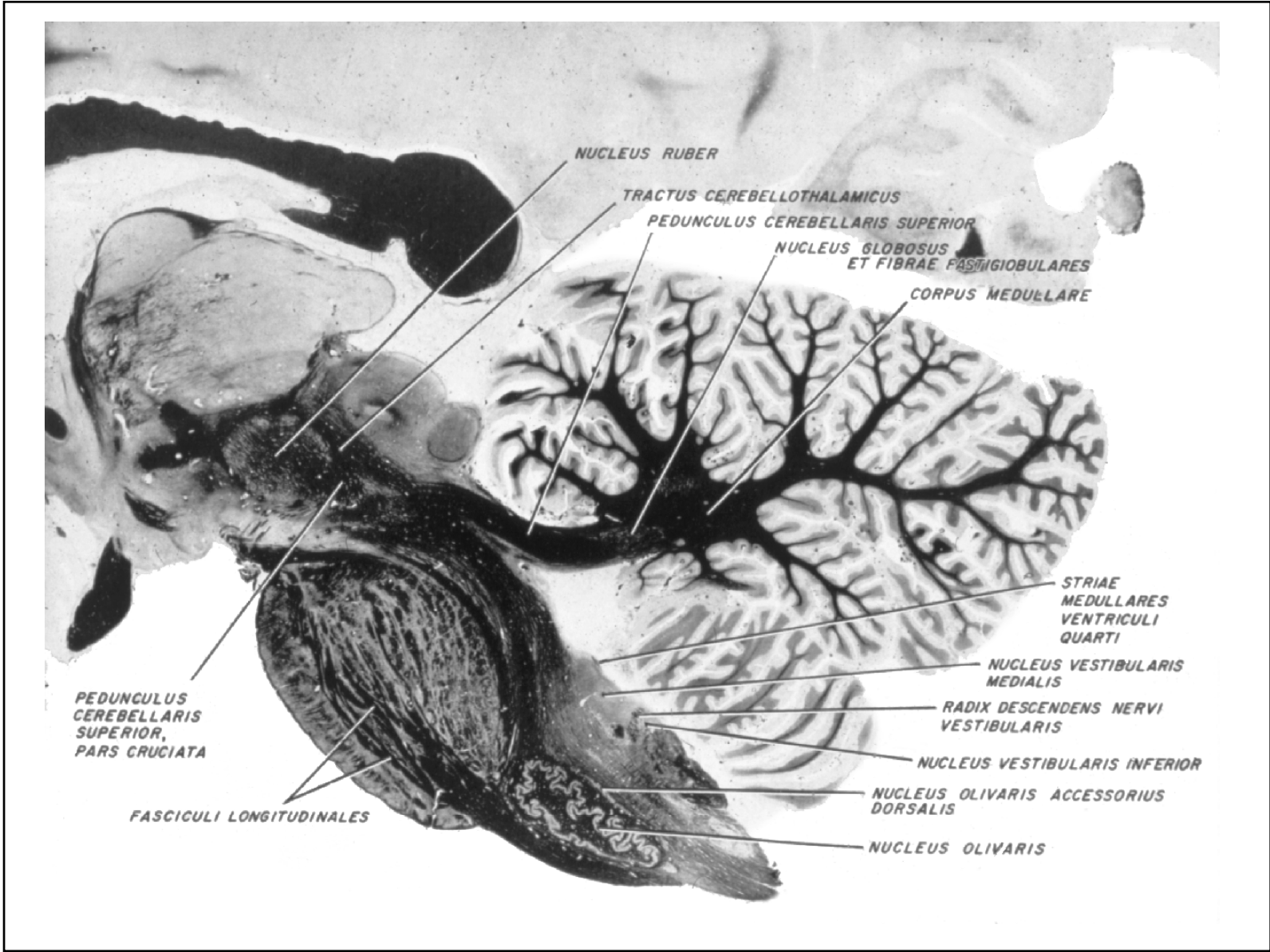


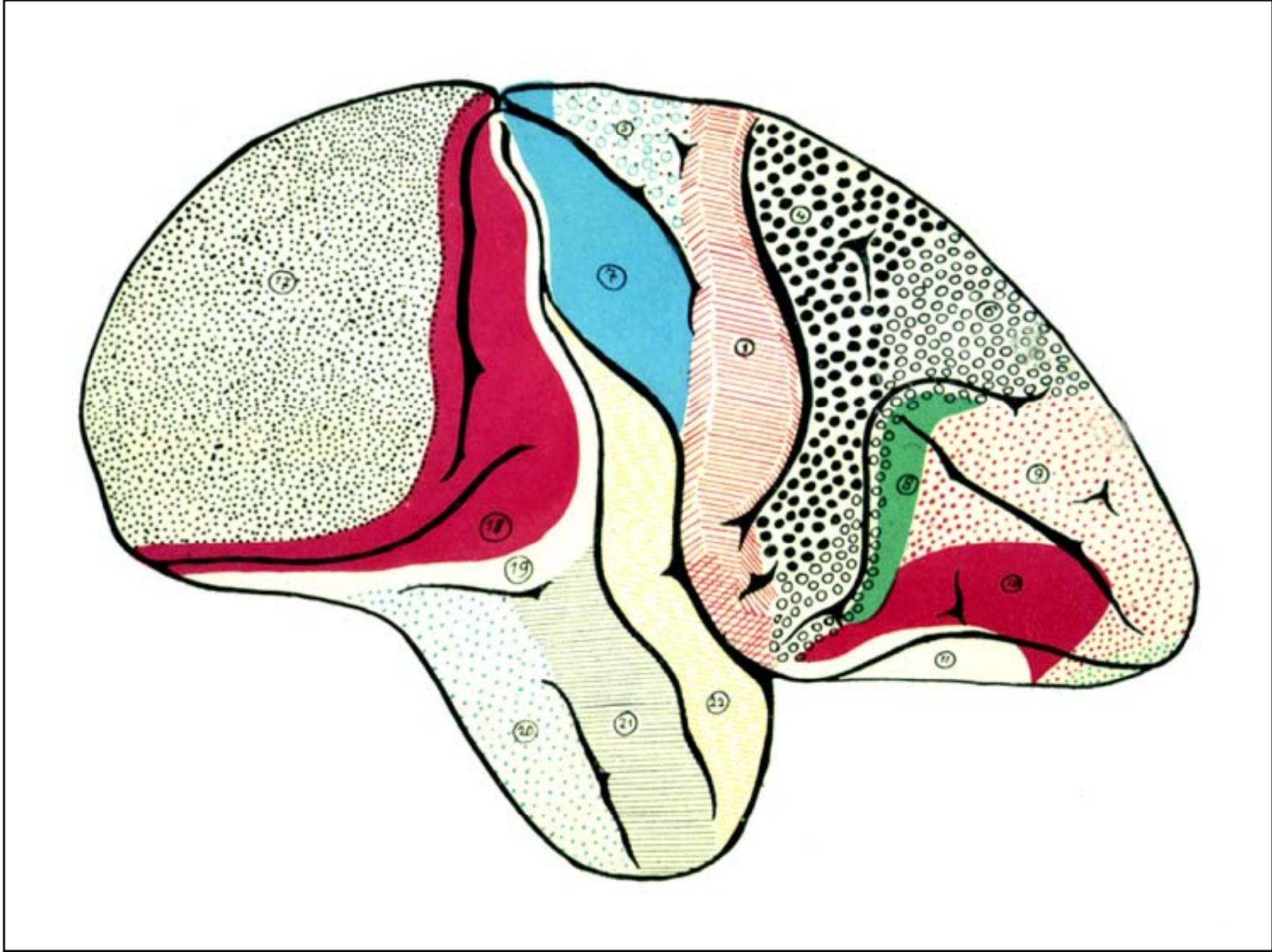


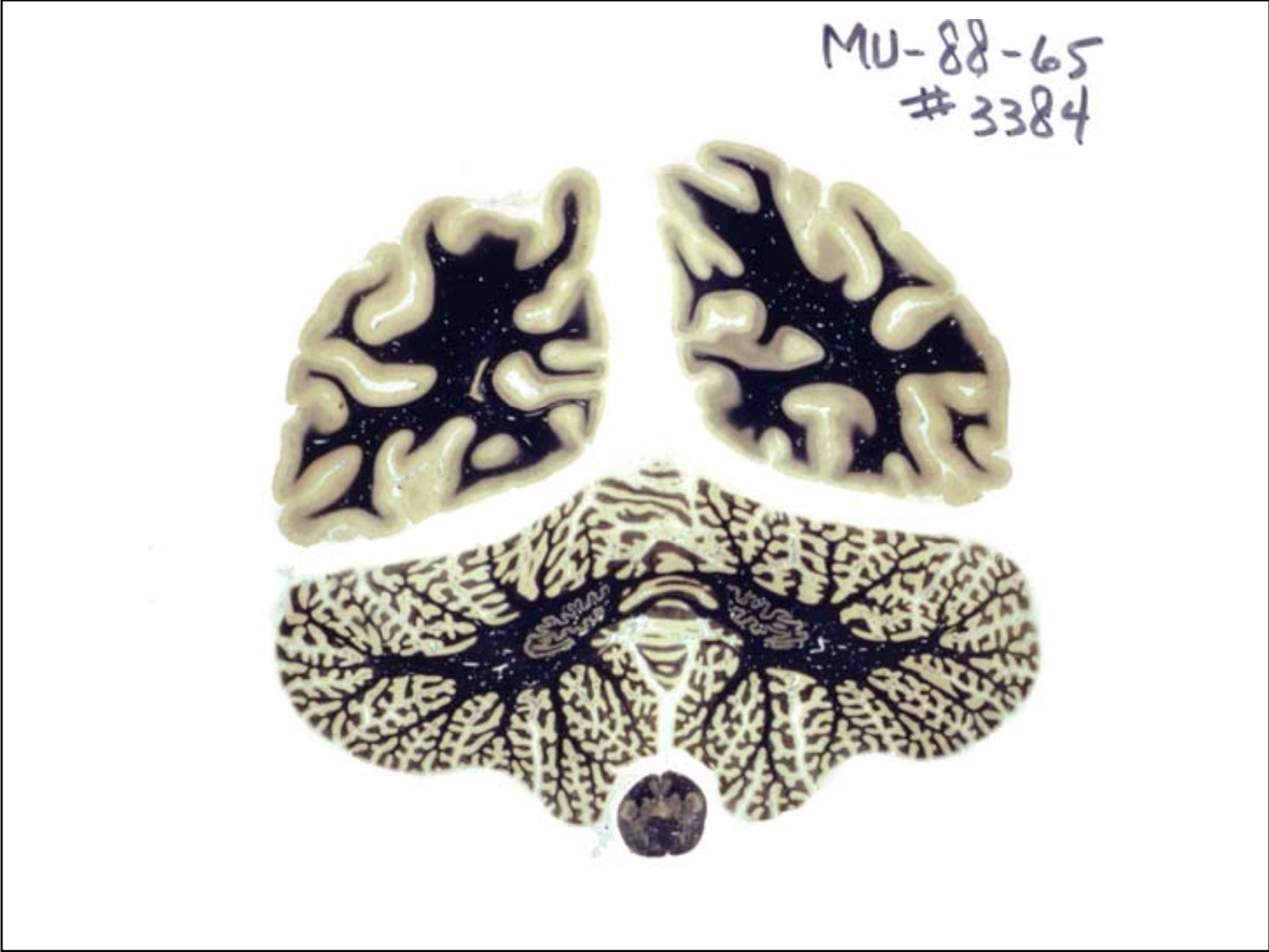


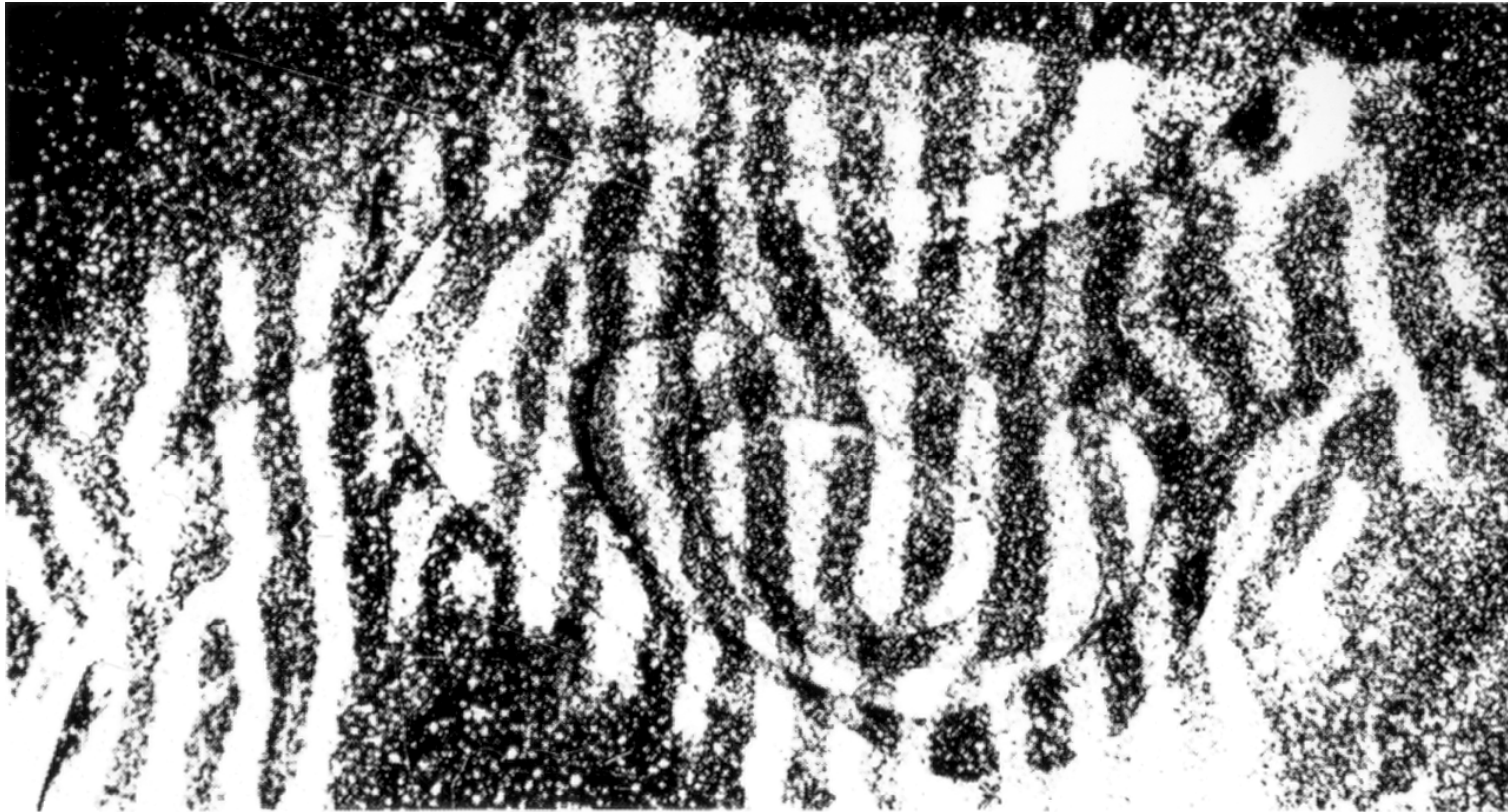




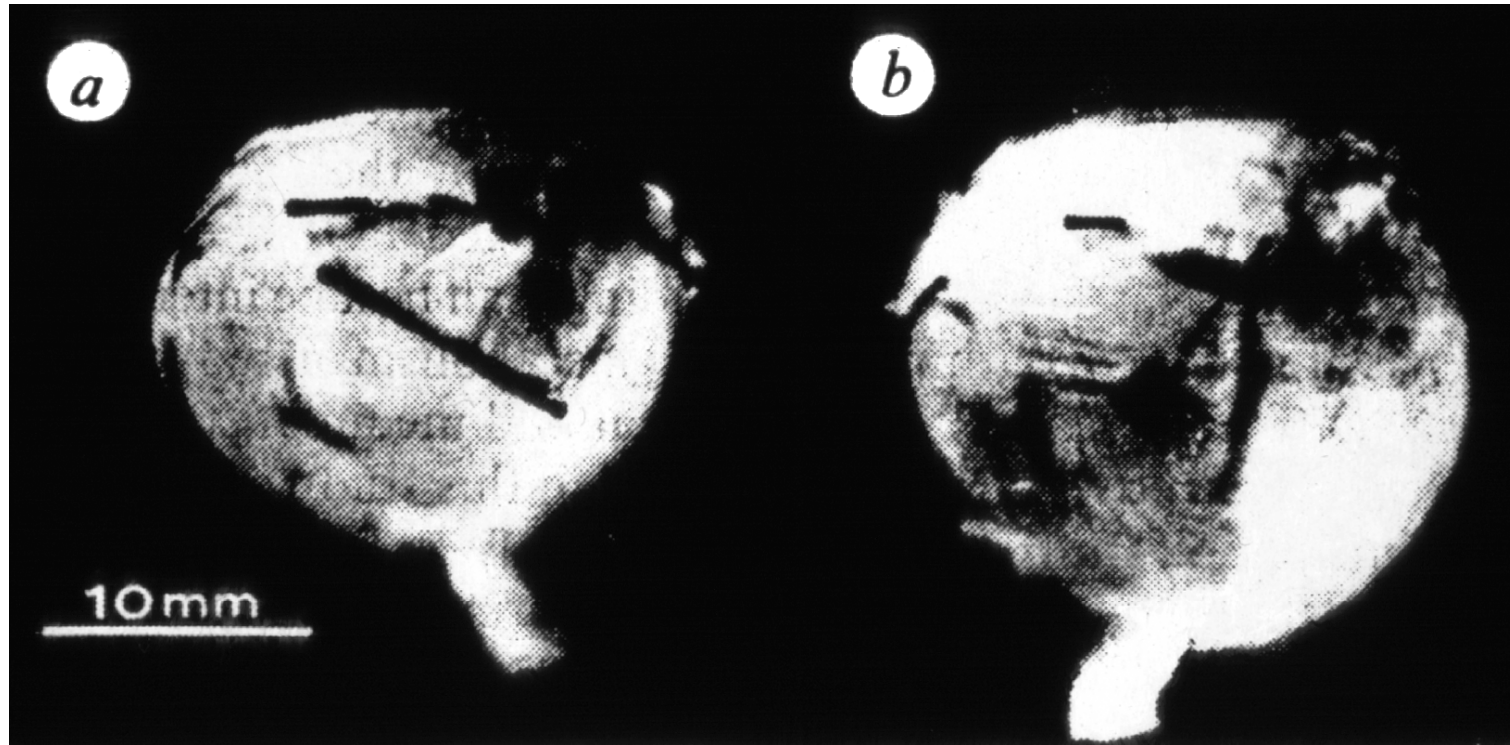








ANATOMICAL CONFIRMATION of ocular-dominance columns came from various staining methods and from axonal-transport autoradiographs such as those shown in color on page 35. This composite autoradiograph visualizing the pattern over an area some 10 millimeters wide was made by cutting out and pasting together the regions representing layer IV in a number of parallel sections; the one in bottom illustration on page 85 and others at different depths.



Eyes of a rhesus monkey in which the lids on the right (*b*) were fused at the age of 2 weeks and opened 18 months later (experiment 5 in Table 1). Suture threads mark the insertions of the extrinsic ocular muscles. The left eye (*a*) was normal.

